

Figure 18-1
Chapter 18: Coastal and Marine Physical Processes
Marine Physical Processes Study Area

The map displays the coastal and marine physical processes study area, which is defined by a red boundary (English Offshore Scheme Scoping Boundary) and a black boundary (Marine Physical Processes Study Area). The study area extends approximately 15 km either side of the scoping boundary. The map includes the Scottish Marine Border (dashed blue line), the 12 NM Limit (dotted white line), and the EEZ (dashed black line). The map shows the coastline of Scotland, major cities like Glasgow and Edinburgh, and various geographical features such as rivers, lakes, and islands. A north arrow is located in the top left corner.

Legend

- English Offshore Scheme Scoping Boundary
- Marine Physical Processes Study Area (15 km either side of Scoping Boundary)
- Scottish Marine Border
- 12 NM Limit
- EEZ

Notes
This drawing is scaled at paper size A3, therefore any prints taken at smaller sizes will affect accuracy of the measurement units and should not be scaled against.

Coordinate System: ETRS89 / UTM zone 30N
X Centroid Coordinate: 673637.5569674941
Y Centroid Coordinate: 6085732.790872705

Scale: 0 15 30 45 60 km

Base map and data from OpenStreetMap and OpenStreetMap Foundation (CC-BY-SA). © https://www.openstreetmap.org and contributors. UKHO Contains public sector information licensed under the Open Government Licence v3.0.

Issue	Date	Remarks	Drawn	Checked	Approved
1	20/08/2025	DRAFT	AN	JC	JDM

Title

Figure 18-1
Chapter 18: Coastal and Marine Physical Processes
Marine Physical Processes Study Area
EGL 5 EIA Scoping Report
Volume 3: Figures






nationalgrid

Figure Number
Figure 18-1

Drawing Reference
C01585-EGL5-GEO-007-B

Scale	Sheet Size	Sheet	Issue
1:1,500,000	A3	SHEET 1 OF 1	1

Legend

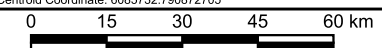
-  English Offshore Scheme Scoping Boundary
-  Marine Physical Processes Study Area (15 km either side of Scoping Boundary)
-  Scottish Marine Border
-  12 NM Limit
-  EEZ

Notes

This drawing is scaled at paper size A3, therefore any prints taken at smaller sizes will affect accuracy of the measurement units and should not be scaled against.



Coordinate System: ETRS89 / UTM zone 30N
X Centroid Coordinate: 673637.5569674941
Y Centroid Coordinate: 6085732.790872705



Base map and data from OpenStreetMap and OpenStreetMap Foundation (CC-BY-SA). © <https://www.openstreetmap.org> and contributors. UKHO Contains public sector information licensed under the Open Government Licence v3.0.

1	20/08/2025	DRAFT	AN	JC	JDM
Issue	Date	Remarks	Drawn	Checked	Approved

[illegible]

Figure 18-1
Chapter 18: Coastal and Marine Physical
Processes
Marine Physical Processes Study Area
EGL 5 EIA Scoping Report
Volume 3: Figures

nationalgrid

Figure Number

Figure 18-1

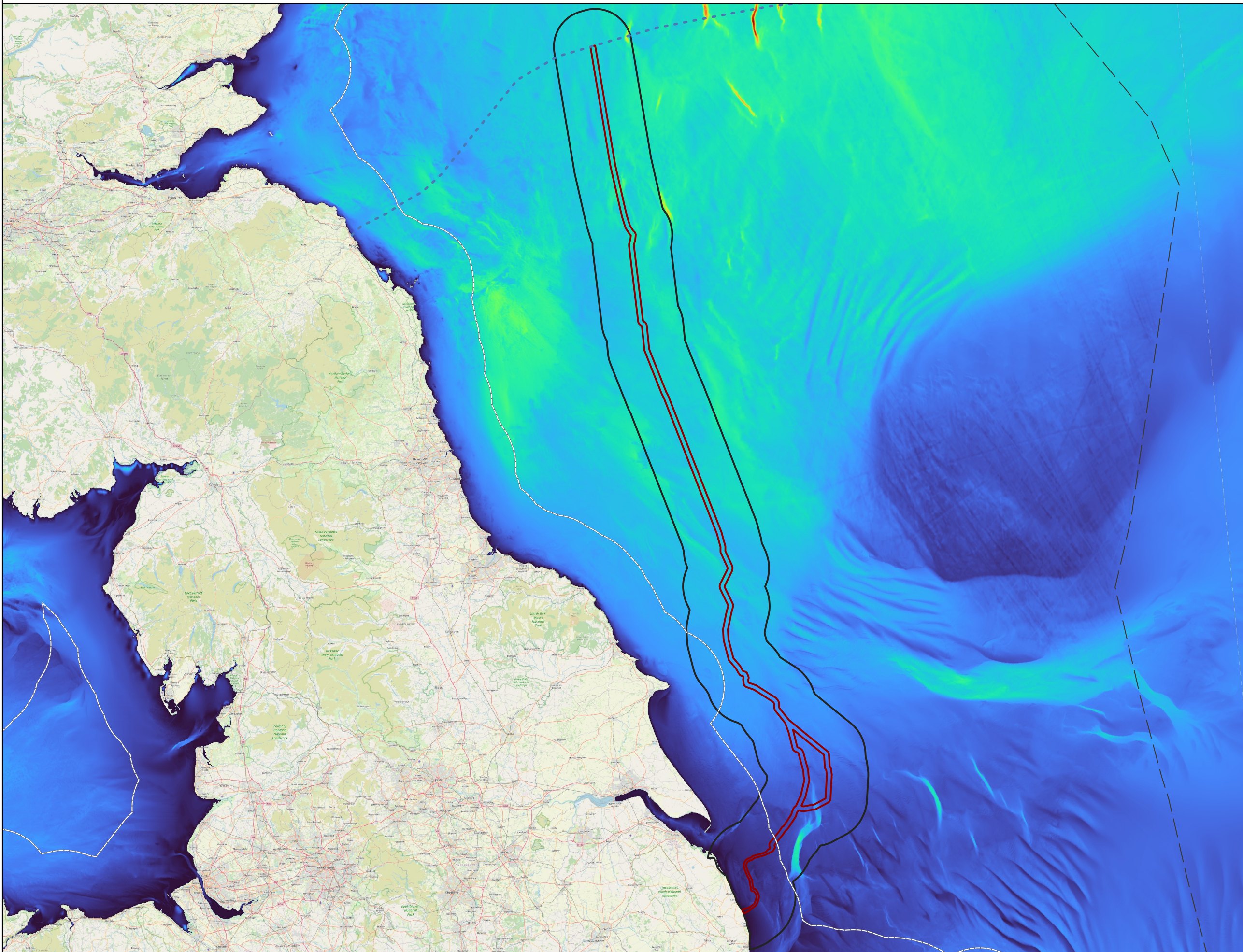
Drawing Reference	
-------------------	--

C01585-EGL5-GEO-007-B

<u>Scale</u>	<u>Sheet Size</u>	<u>Sheet</u>	<u>Issue</u>
1:1,500,000	A3	SHEET 1 OF 1	1



Figure 18-2
Chapter 18: Coastal and Marine Physical Processes
Bathymetry



Legend

- English Offshore Scheme Scoping Boundary
- Marine Physical Processes Study Area (15 km either side of English Offshore Scheme Scoping Boundary)
- Scottish Marine Border
- 12 NM Limit
- EEZ

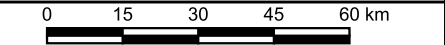
Bathymetry (Depth, m)

-250	-160	-70
-240	-150	-60
-230	-140	-50
-220	-130	-40
-210	-120	-30
-200	-110	-20
-190	-100	-10
-180	-90	0
-170	-80	

Notes
This drawing is scaled at paper size A3, therefore any prints taken at smaller sizes will affect accuracy of the measurement units and should not be scaled against.



Coordinate System: ETRS89 / UTM zone 30N
X Centroid Coordinate: 673637.5569674941
Y Centroid Coordinate: 6085732.790872705



Base map and data from OpenStreetMap and OpenStreetMap Foundation (CC-BY-SA). © <https://www.openstreetmap.org> and contributors. UKHO Contains public sector information licensed under the Open Government Licence v3.0.

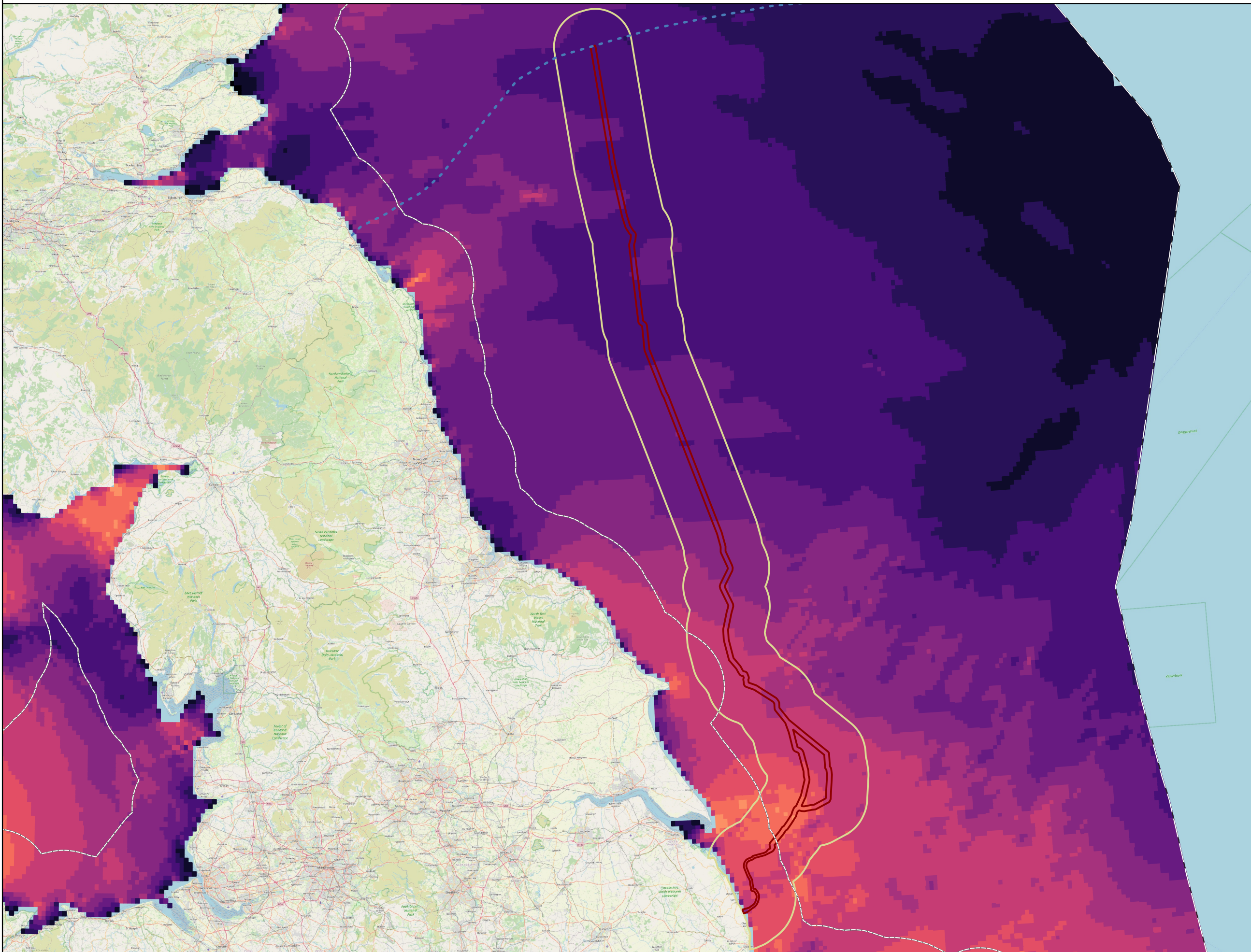
1	20/08/2025	DRAFT	AN	JC	JDM
Issue	Date	Remarks	Drawn	Checked	Approved

Title

Figure 18-2
Chapter 18: Coastal and Marine Physical Processes
Bathymetry
EGL 5 EIA Scoping Report
Volume 3: Figures



Figure 18-3
Chapter 18: Coastal and Marine Physical Processes
Peak Flow for a Mean Spring Tide



Legend

- English Offshore Scheme Scoping Boundary
- Marine Physical Processes Study Area (15 km either side of English Offshore Scheme Scoping Boundary)
- Scottish Marine Border
- 12 NM Limit
- EEZ

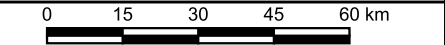
Tide Peak Flow (m/s) (ABPmer, 2017)

- | | |
|-------------|------------|
| 0 - 0.1 | 0.75 - 1 |
| 0.1 - 0.25 | 1 - 1.2 |
| 0.25 - 0.35 | 1.2 - 1.4 |
| 0.35 - 0.45 | 1.4 - 1.8 |
| 0.45 - 0.55 | 1.8 - 2.25 |
| 0.55 - 0.65 | 2.25 - 3 |
| 0.65 - 0.75 | 3 - 4.5 |

Notes
This drawing is scaled at paper size A3, therefore any prints taken at smaller sizes will affect accuracy of the measurement units and should not be scaled against.



Coordinate System: ETRS89 / UTM zone 30N
X Centroid Coordinate: 673637.5569674941
Y Centroid Coordinate: 6085732.790872705



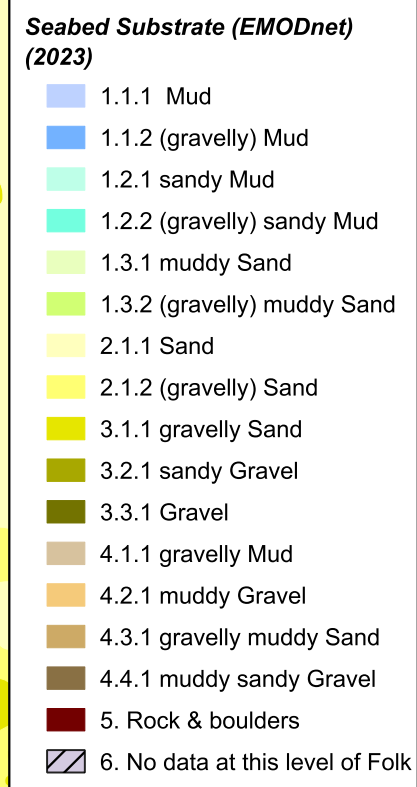
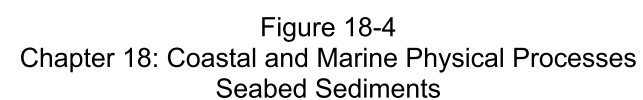
Base map and data from OpenStreetMap and OpenStreetMap Foundation (CC-BY-SA). © <https://www.openstreetmap.org> and contributors. UKHO, ABPmer. Contains public sector information licensed under the Open Government Licence v3.0.






1	20/08/2025	DRAFT	AN	JC	JDM
Issue	Date	Remarks	Drawn	Checked	Approved

Title

Figure 18-3
Chapter 18: Coastal and Marine Physical Processes
Peak Flow for a Mean Spring Tide
EGL 5 EIA Scoping Report
Volume 3: Figures

nationalgrid			
Figure Number			
Figure 18-3			
Drawing Reference			
C01585-EGL5-GEO-003-B			
Scale	Sheet Size	Sheet	Issue
1:1,500,000	A3	SHEET 1 OF 1	1



-  English Offshore Scheme Scoping Boundary
-  Marine Physical Processes Study Area (15 km either side of English Offshore Scheme Scoping Boundary)
-  Scottish Marine Border
-  12 NM Limit
-  EEZ

This drawing is scaled at paper size A3, therefore any prints taken at smaller sizes will affect accuracy of the measurement units and should not be scaled against.



Base map and data from OpenStreetMap and OpenStreetMap Foundation (CC-BY-SA). © <https://www.openstreetmap.org> and contributors. UKHO, Contains public sector information licensed under the Open Government Licence v3.0. Data used in this map was made available by the EMODnet Geology project, <http://www.emodnet-geology.eu> funded by the European Commission Directorate General for Maritime Affairs and Fisheries.

1	20/08/2025	DRAFT	AN	JC	JDM
Issue	Date	Remarks	Drawn	Checked	Approved

Title

Figure 18-4
Chapter 18: Coastal and Marine Physical
Processes
Seabed Sediments
EGL 5 EIA Scoping Report
Volume 3: Figures

nationalgrid

Figure Number

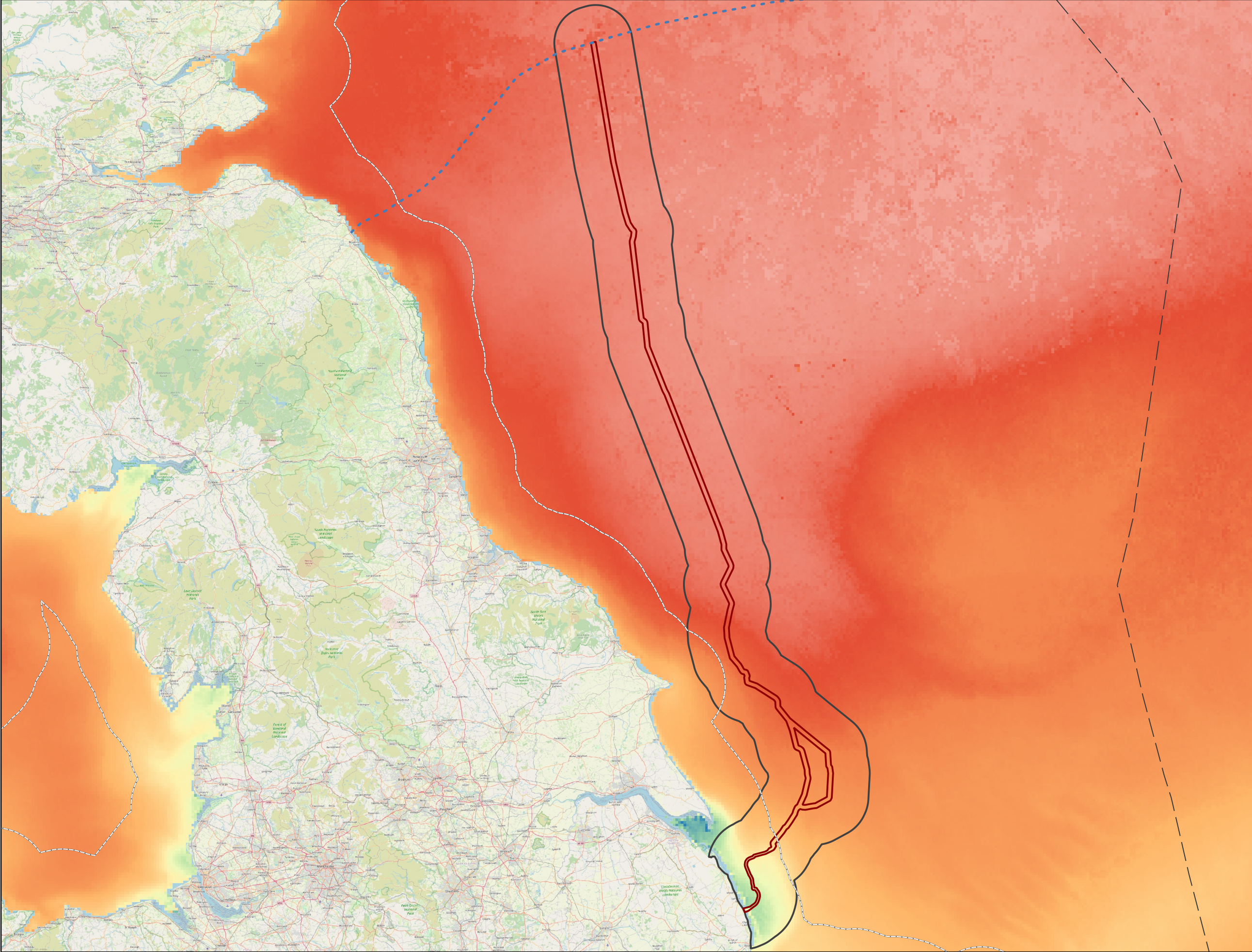
Figure 18-4

Drawing Reference	C01585-EGL5-GEO-004-B
-------------------	-----------------------

<u>Scale</u>	<u>Sheet Size</u>	<u>Sheet</u>	<u>Issue</u>
--------------	-------------------	--------------	--------------



Figure 18-5
Chapter 18: Coastal and Marine Physical Processes
Annual Mean Suspended Particulate Matter



Legend

- English Offshore Scheme Scoping Boundary
- Marine Physical Processes Study Area (15 km either side of English Offshore Scheme Scoping Boundary)
- Scottish Marine Border
- 12 NM Limit
- EEZ

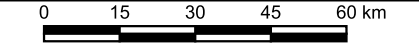
Suspended Particulate Matter (mg/l) (CEFAS, 2016)

- 1
- 2
- 5
- 10
- 15
- 20
- 25
- 30
- 40
- 50
- 60

Notes
This drawing is scaled at paper size A3, therefore any prints taken at smaller sizes will affect accuracy of the measurement units and should not be scaled against.



Coordinate System: ETRS89 / UTM zone 30N
X Centroid Coordinate: 673637.5569674941
Y Centroid Coordinate: 6085732.790872705



Base map and data from OpenStreetMap and OpenStreetMap Foundation (CC-BY-SA). © <https://www.openstreetmap.org> and contributors. UKHO, CEFAS, Contains public sector information licensed under the Open Government Licence v3.0.

1	20/08/2025	DRAFT	AN	JC	JDM
Issue	Date	Remarks	Drawn	Checked	Approved

Title

Figure 18-5
Chapter 18: Coastal and Marine Physical Processes
Annual Mean Suspended Particulate Matter
EGL 5 EIA Scoping Report
Volume 3: Figures

nationalgrid

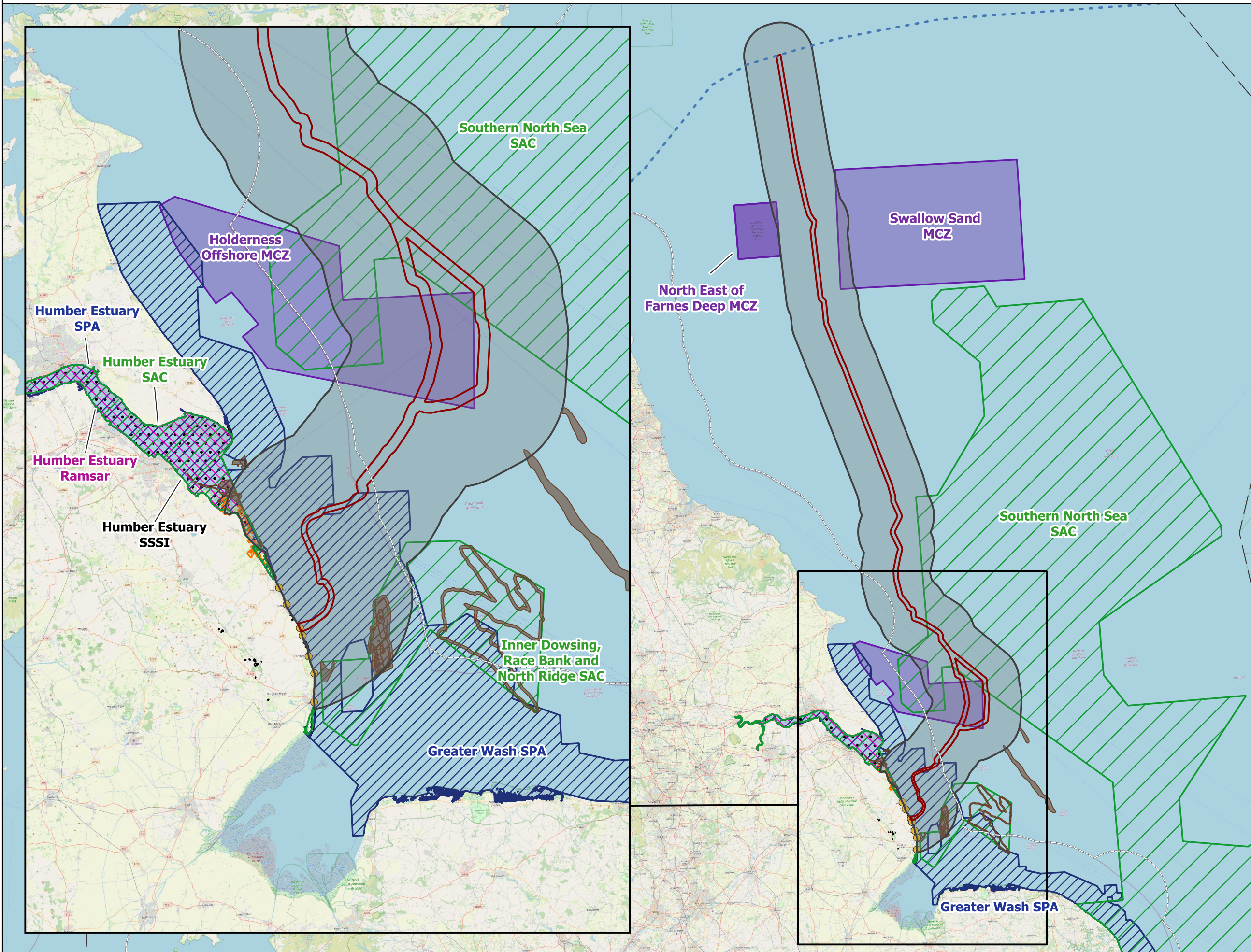
Figure Number Figure 18-5

Drawing Reference C01585-EGL5-GEO-005-B

Scale 1:1,500,000	Sheet Size A3	Sheet SHEET 1 OF 1	Issue 1
-----------------------------	-------------------------	------------------------------	-------------------



Figure 18-6
Chapter 18: Coastal and Marine Physical Processes
Designated Sites and Bathing Waters within the Study Area



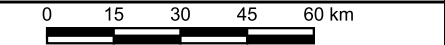
Legend

- English Offshore Scheme Scoping Boundary
- Marine Physical Processes Study Area (15 km either side of English Offshore Scheme Scoping Boundary)
- Bathing Water
- Annex I Sandbank
- Marine Conservation Zone
- National Nature Reserve
- Ramsar Site
- Site of Special Scientific Interest
- Special Area of Conservation
- Special Protection Area
- Scottish Marine Border
- 12 NM Limit
- EEZ

Notes
This drawing is scaled at paper size A3, therefore any prints taken at smaller sizes will affect accuracy of the measurement units and should not be scaled against.



Coordinate System: ETRS89 / UTM zone 30N
X Centroid Coordinate: 589180.0384794085
Y Centroid Coordinate: 6066345.444940084



Base map and data from OpenStreetMap and OpenStreetMap Foundation (CC-BY-SA). ©
<https://www.openstreetmap.org> and contributors. UKHO, CEFA, Contains public sector information licensed under the Open Government Licence v3.0.

1	20/08/2025	DRAFT	AN	JC	JDM
Issue	Date	Remarks	Drawn	Checked	Approved

Title

Figure 18-6
Chapter 18: Coastal and Marine Physical Processes
Designated Sites and Bathing Waters within the Study Area
EGL 5 EIA Scoping Report
Volume 3: Figures

nationalgrid					
Figure Number	Figure 18-6				
Drawing Reference	C01585-EGL5-GEO-006-B				
Scale	Sheet Size	Sheet	Issue		
1:1,700,000	A3	SHEET 1 OF 1	1		

